



MATERIALS:

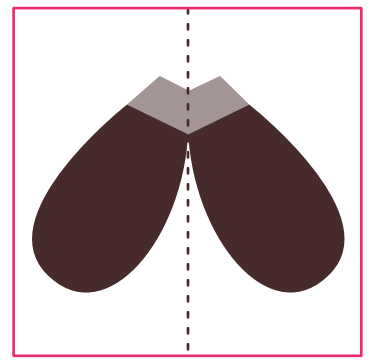
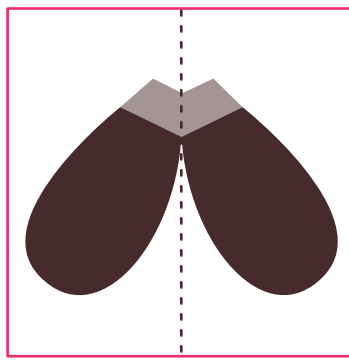
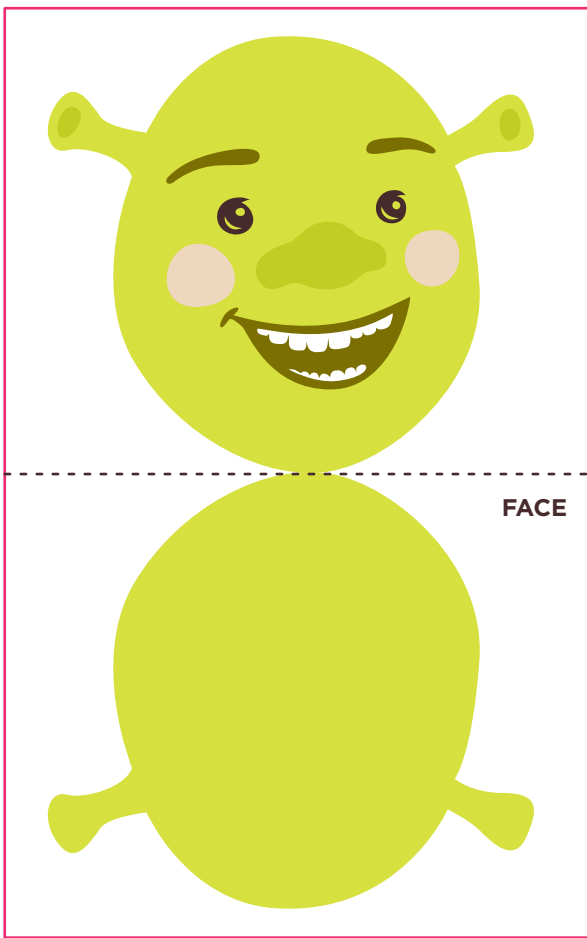
- Metal-edged ruler
- Butter knife
- Scissors or X-ACTO knife
- Cutting mat (optional)
- Multipurpose glue

3-D Shrek

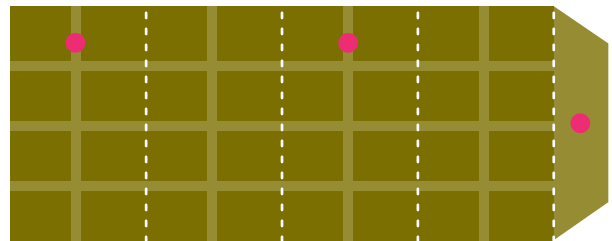
Assembly Instructions

| | |
|---|---|
| 01. Score all the pieces. Using a ruler as a guide, run the back side of a butter knife firmly along all the dotted lines. | 02. Using scissors or an X-ACTO knife and cutting mat, cut out all the pieces along the outer edges, being sure to only cut out boxes around the face and feet. |
| 03. Fold the face and feet pieces down the center dotted line and glue together. Once dry, cut out each piece along the outer edge. | 04. On the outer side panels and inner side panels, fold on all the dotted lines. Glue the inner side panels to the backside of Shrek's body, using the pink dots as a guide on where to apply glue. Allow to dry completely. |
| 05. Glue tab A under the outer side panel. Then glue the outer side panels to the backside of Shrek's body, using the pink dots as a guide on where to apply glue. Allow to dry completely. | 06. Glue the front of Shrek's body onto the remaining side panel tabs. |
| 07. Assemble Shrek's legs by folding on all the dotted lines and glue the tab on each leg to the back of the piece. Then place glue on the pink dot guides and place in between the two body panels. Allow to dry completely. | 08. Glue tab on foot to inside of Shrek's leg. Fold foot upward and repeat with other foot. |
| 09. Glue Shrek's head to the top of the front side panel, where it is labeled. | 10. Done! |

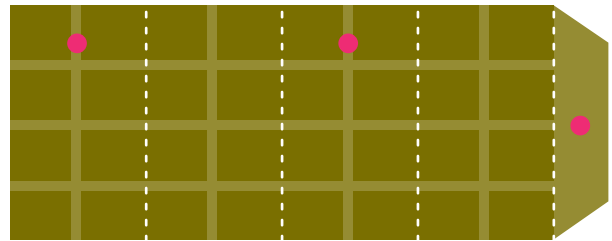




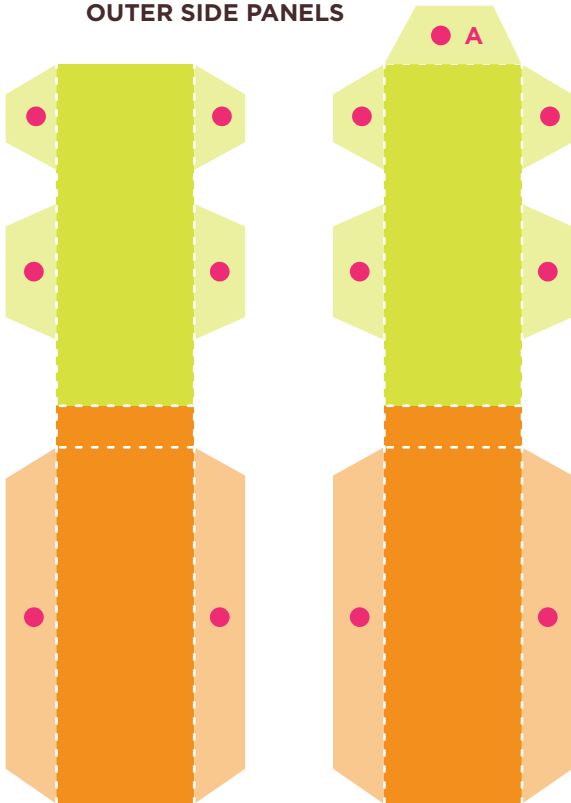
FEET



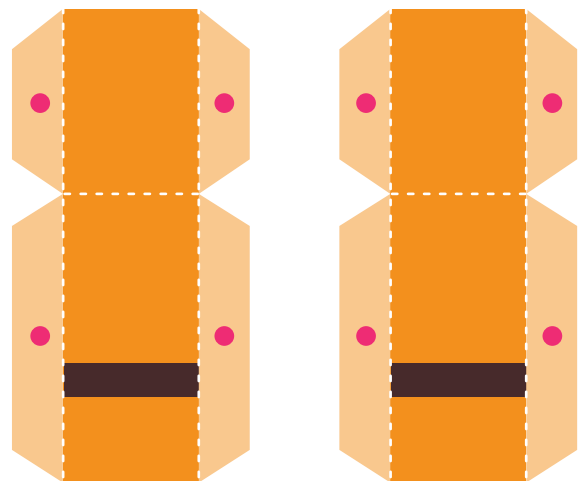
LEGS



OUTER SIDE PANELS



INNER SIDE PANELS





FRONT



BACK



**MATERIALS:**

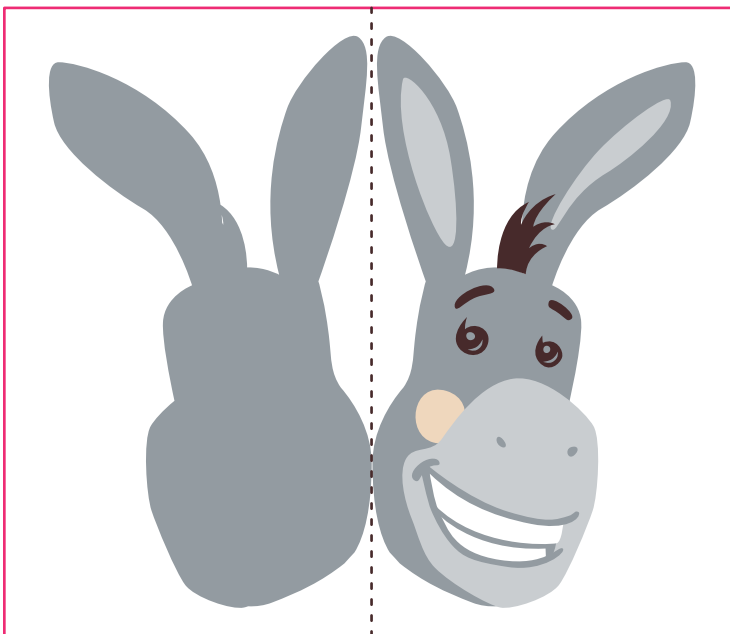
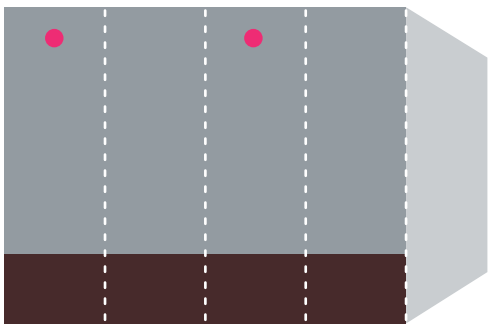
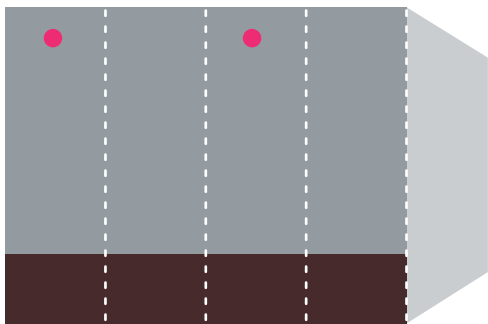
- Metal-edged ruler
- Butter knife
- Scissors or X-ACTO knife
- Cutting mat (optional)
- Multipurpose glue

3-D Donkey

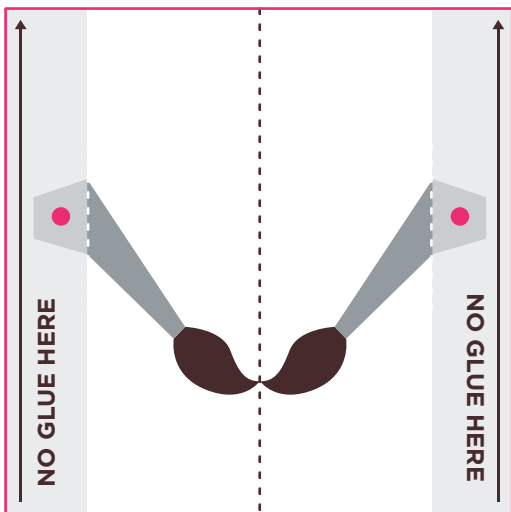
Assembly Instructions

| | |
|---|--|
| 01. Score all the pieces. Using a ruler as a guide, run the back side of a butter knife firmly along all the dotted lines. | 02. Using scissors or an X-ACTO knife and cutting mat, cut out all the pieces along the outer edges, being sure to only cut out boxes around the face and tail. Also, remember to cut the slit on the side piece. |
| 03. Fold the face and tail pieces down the center dotted line and glue together. On the tail, make sure to pay attention to where NOT to apply glue. Once dry, cut out each piece along the outer edge. | 04. Fold the side panel on all the dotted lines. Place the tail through the cut out slit and glue the tabs to the inside of the side panel piece. |
| 05. Glue the side panel to the back side of Donkey's body. Allow glue to dry completely. Repeat with back side on remaining tabs. | 06. Assemble Donkey's legs by folding on all the dotted lines and glue the tab on each leg to the back of the piece. Then place glue on the pink dot guides and place in between the two body panels. Allow to dry completely. |
| 07. Glue Donkey's head to the top of the front side panel, where it is labeled. | 08. Done! |
| | |





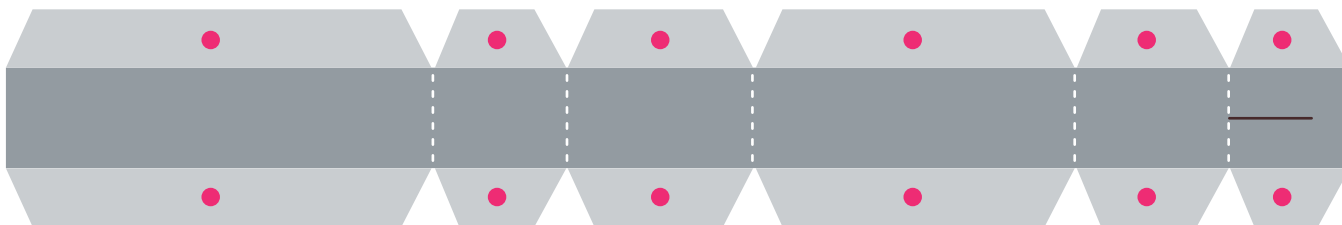
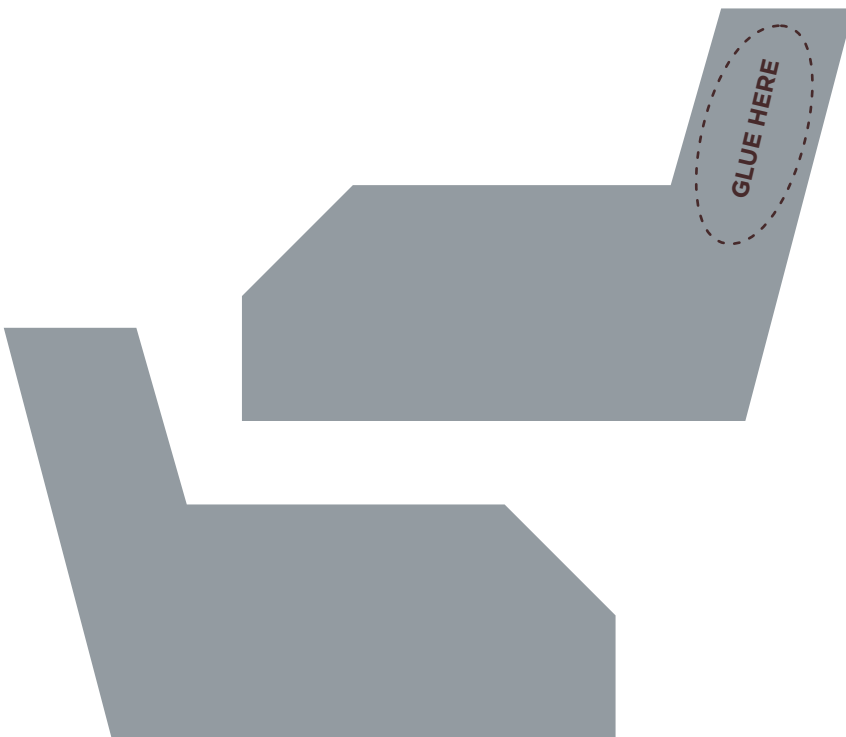
FACE: CUT OUT RECTANGLE, FOLD ON DOTTED LINE, GLUE TOGETHER.



TAIL:

**CUT OUT SQUARE,
FOLD ON CENTER DOTTED LINE,
AND GLUE TOGETHER.**

**DO NOT GLUE IN
THE GREY AREA**



© 2016 DreamWorks Animation LLC. All Rights Reserved. © 2016 Twentieth Century Fox Home Entertainment LLC. All Rights Reserved.
TWENTIETH CENTURY FOX, FOX and associated logos are trademarks of Twentieth Century Fox Film Corporation and its related entities.





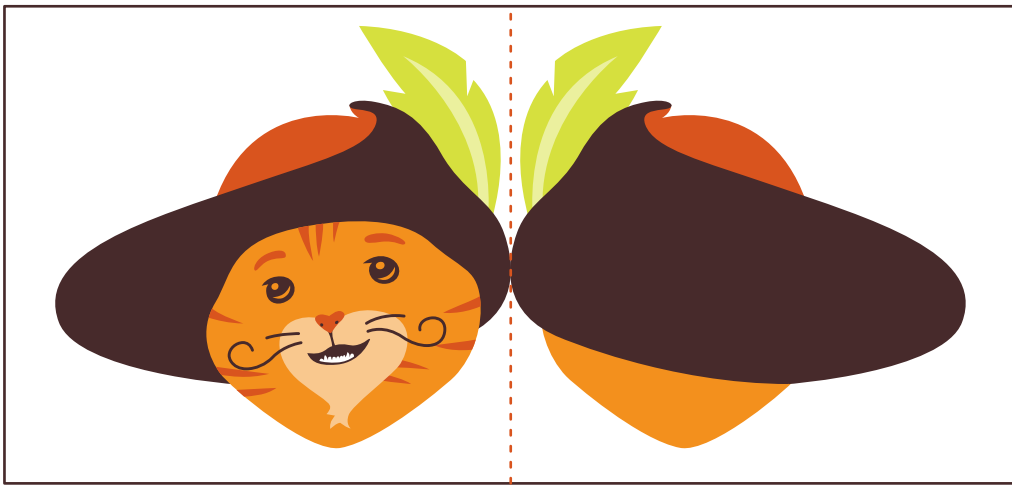
MATERIALS:

- Metal-edged ruler
- Butter knife
- Scissors or X-ACTO knife
- Cutting mat (optional)
- Multipurpose glue

3-D Puss in Boots Assembly Instructions

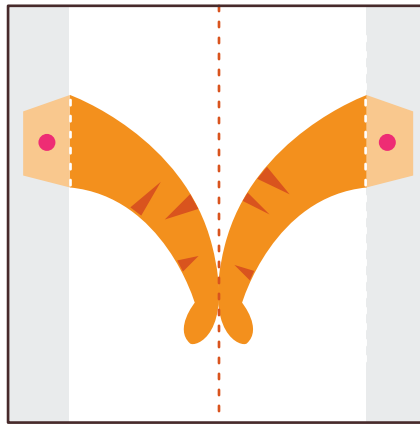
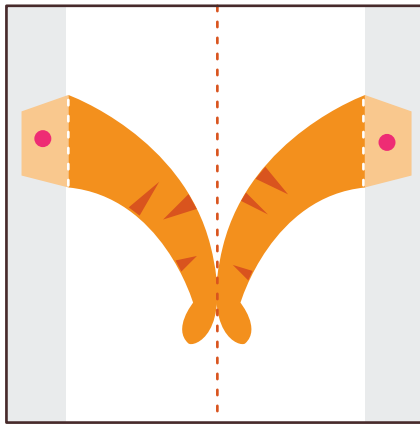
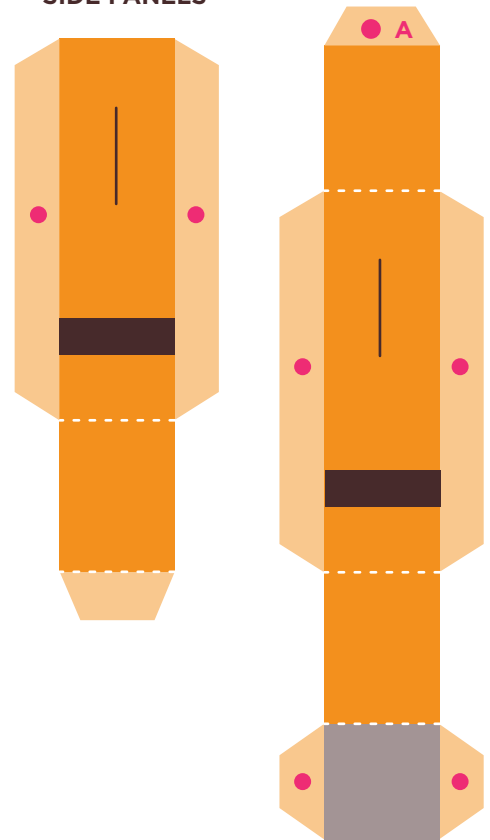
| | |
|--|--|
| 01. Score all the pieces. Using a ruler as a guide, run the back side of a butter knife firmly along all the dotted lines. | 02. Using scissors or an X-ACTO knife and cutting mat, cut out all the pieces along the outer edges, being sure to only cut out boxes around the face and arms. Also, remember to cut the slit on the side panel pieces. |
| 03. Fold the face and arm pieces down the center dotted line and glue together. On the arms, make sure to pay attention to where NOT to apply glue. Once dry, cut out each piece along the outer edge. | 04. On both side panels, fold on all the dotted lines. Place each arm through the cut out slits on the side panels and glue the tabs to the inside of the side panel piece. |
| 05. Glue tab A on the side panel to the back of the other side panel (on the side nearest the arm). Glue the tabs to the back side of Puss' body. Allow to dry, then repeat and glue the other body panel to the remaining tabs. | 06. Assemble the cape by folding on the dotted lines. Apply glue on the pink dot and fold the other side of the cape over the glue. Allow to dry completely and place the cape over the body. |
| 07. Assemble the boots by folding on the dotted lines and gluing the tabs behind the individual pieces. Glue the brown part of the piece to the bottom of the Puss' body. | 08. Glue Puss' head to the top of the front side panel, where it is labeled. |
| 09. Done! | |



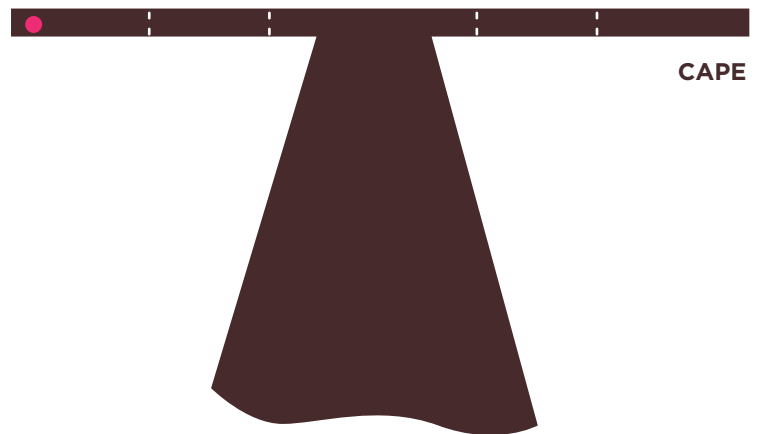


FACE: CUT OUT RECTANGLE, FOLD ON DOTTED LINE, GLUE TOGETHER.

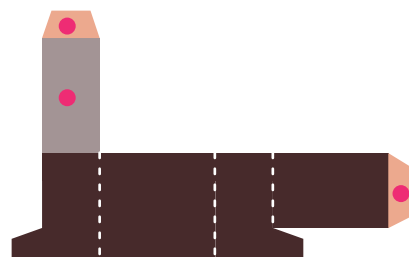
SIDE PANELS



ARMS: CUT OUT SQUARE, FOLD ON CENTER DOTTED LINE, GLUE TOGETHER.
DO NOT GLUE IN THE GREY AREA.



BOOTS



© 2016 DreamWorks Animation LLC. All Rights Reserved. © 2016 Twentieth Century Fox Home Entertainment LLC. All Rights Reserved.
TWENTIETH CENTURY FOX, FOX and associated logos are trademarks of Twentieth Century Fox Film Corporation and its related entities.



**MATERIALS:**

- Metal-edged ruler
- Butter knife
- Scissors or X-ACTO knife
- Cutting mat (optional)
- Multipurpose glue

3-D Ogre Warrior Assembly Instructions

01. Score all the pieces. Using a ruler as a guide, run the back side of a butter knife firmly along all the dotted lines.

02. Using scissors or an X-ACTO knife and cutting mat, cut out all the pieces along the outer edges, being sure to only cut out boxes around the face, feet, and club. Also, remember to cut the slit on the side panel pieces.

03. Fold the face, feet, and club pieces down the center dotted line and glue together. Once dry, cut out each piece along the outer edge.

04. On the outer side panels and inner side panels, fold on all the dotted lines. Glue the inner side panels to the backside of Shrek's body, using the pink dots as a guide on where to apply glue. Allow to dry completely.

05. Glue tab A on the outer side panel to the bottom of the other outer side panel. Then glue the outer side panels to the backside of Shrek's body, using the pink dots as a guide on where to apply glue. Allow to dry completely.

06. Glue the front of the warrior's body onto the remaining side panel tabs.

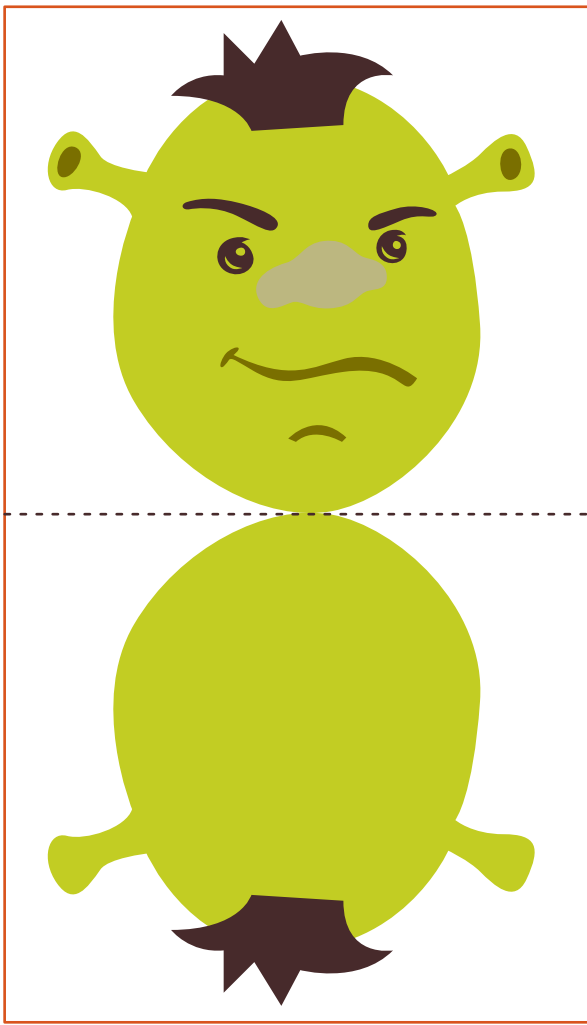
07. Assemble the legs by folding on all the dotted lines and glue the tab on each leg to the back of the piece. Then place glue on the pink dot guides and place in between the two body panels. Allow to dry completely.

08. Glue tab on foot to inside of the warrior's leg. Fold foot upward and repeat with other foot.

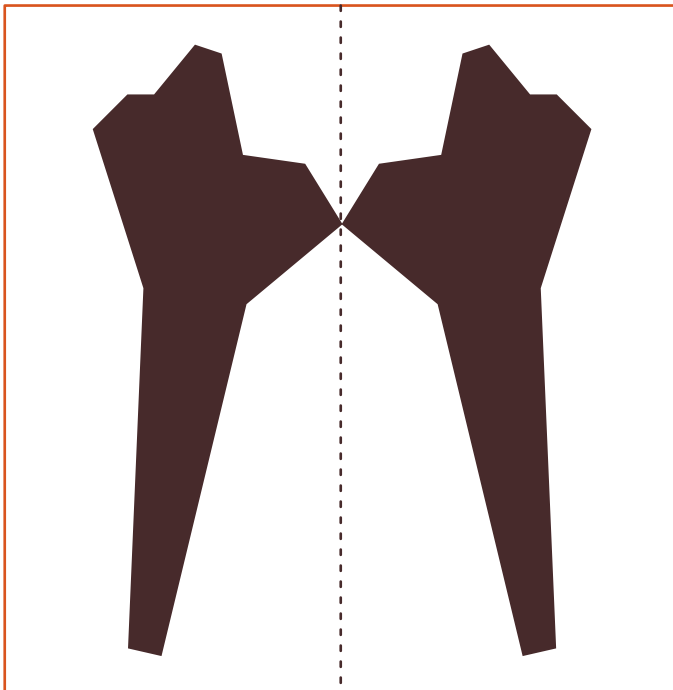
09. Glue the warrior's head to the top of the front side panel, where it is labeled. Then insert the club through both cut-out slits on the raised arm.

10. Done!



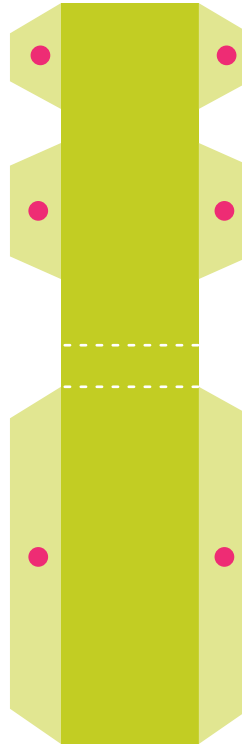


FACE: CUT OUT RECTANGLE, FOLD ON DOTTED LINE, GLUE TOGETHER.

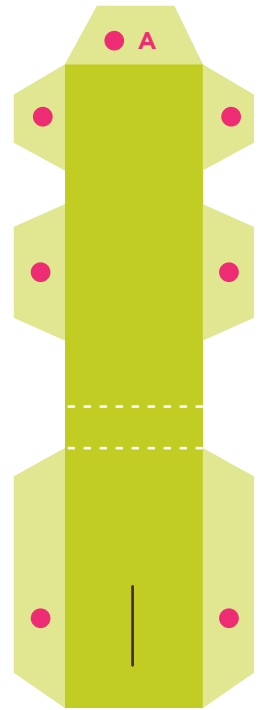


CLUB: CUT OUT RECTANGLE, FOLD ON DOTTED LINE, GLUE TOGETHER.

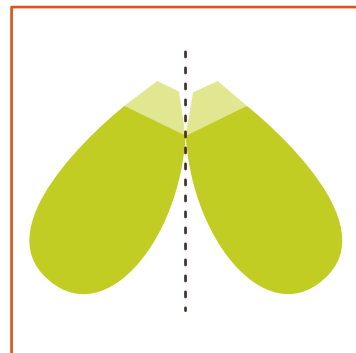
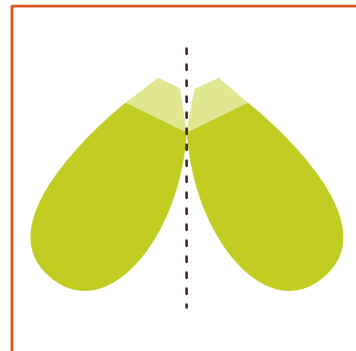
**OUTER SIDE PANEL:
ARM AT SIDE**

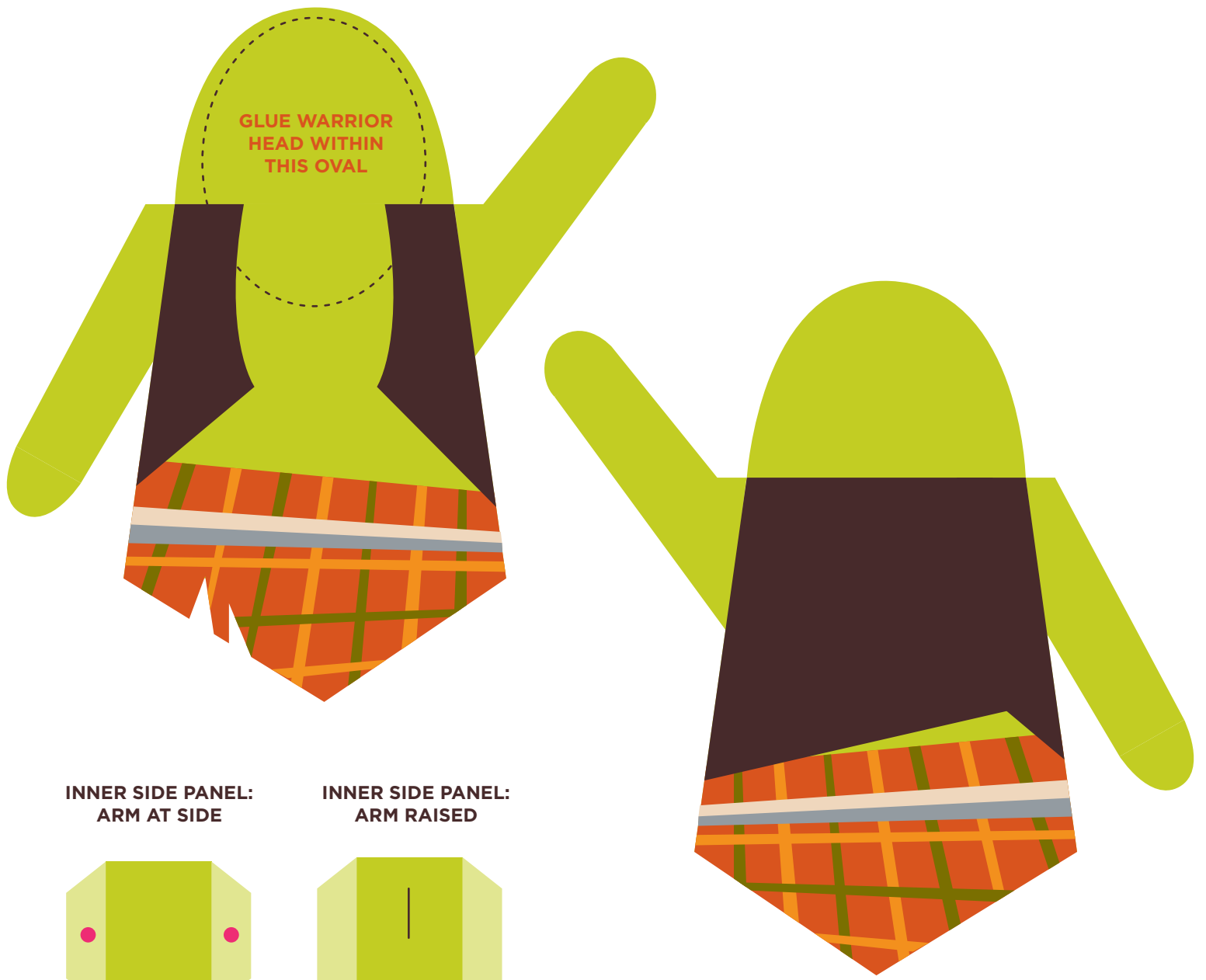


**OUTER SIDE PANEL:
ARM RAISED**

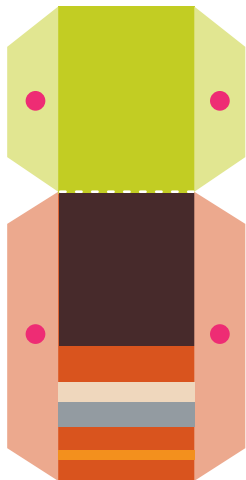


**FEET:
CUT OUT
SQUARES FIRST**

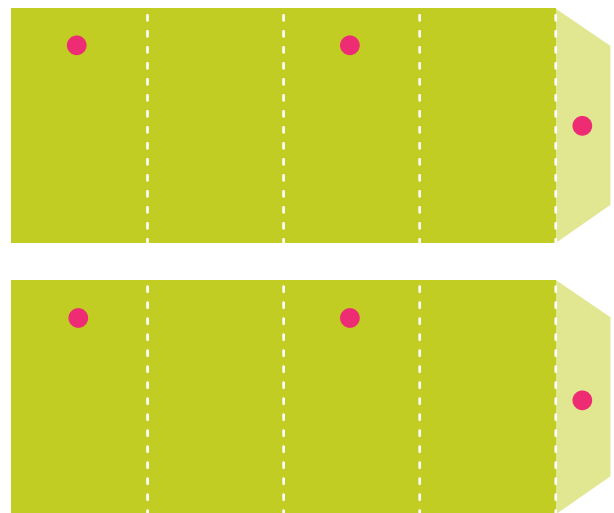




INNER SIDE PANEL:
ARM AT SIDE



INNER SIDE PANEL:
ARM RAISED



LEGS



**MATERIALS:**

- Metal-edged ruler
- Butter knife
- Scissors or X-ACTO knife
- Cutting mat (optional)
- Multipurpose glue

3-D Shrek

Assembly Instructions

01. Score all the pieces. Using a ruler as a guide, run the back side of a butter knife firmly along all the dotted lines.

02. Using scissors or an X-ACTO knife and cutting mat, cut out all the pieces along the outer edges, being sure to only cut out boxes around the face and feet.

03. Fold the face and feet pieces down the center dotted line and glue together. Once dry, cut out each piece along the outer edge.

04. On the outer side panels and inner side panels, fold on all the dotted lines. Glue the inner side panels to the backside of Shrek's body, using the pink dots as a guide on where to apply glue. Allow to dry completely.

05. Glue tab A under the outer side panel. Then glue the outer side panels to the backside of Shrek's body, using the pink dots as a guide on where to apply glue. Allow to dry completely.

06. Glue the front of Shrek's body onto the remaining side panel tabs.

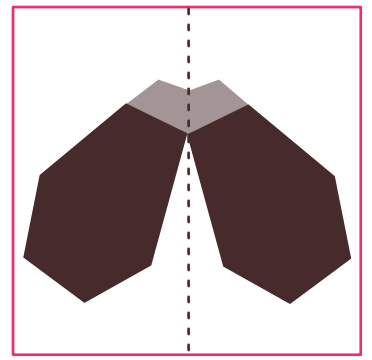
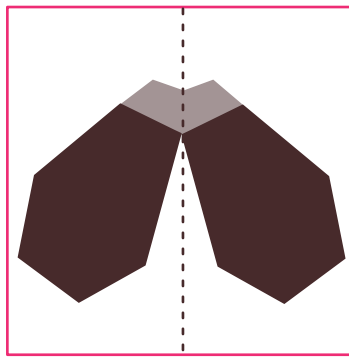
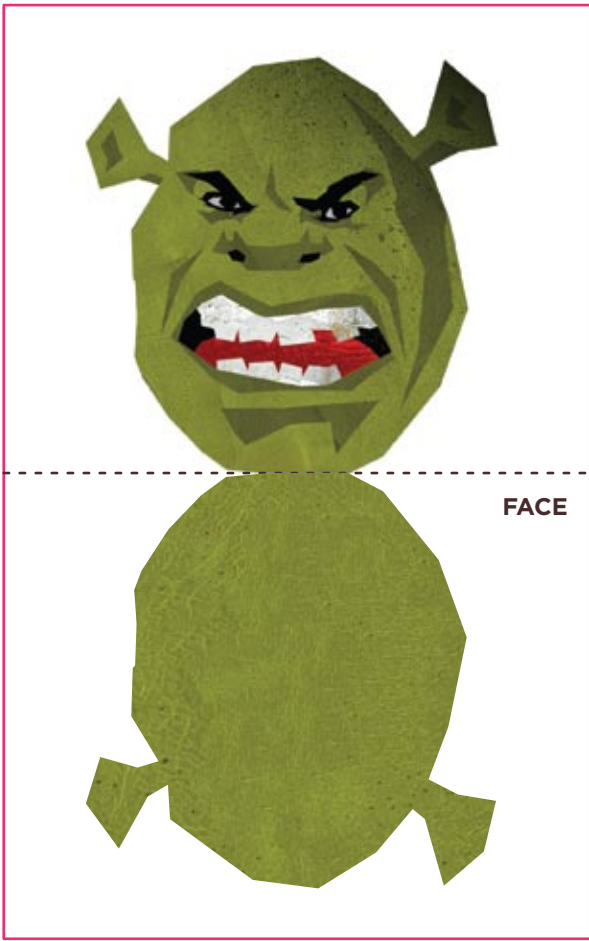
07. Assemble Shrek's legs by folding on all the dotted lines and glue the tab on each leg to the back of the piece. Then place glue on the pink dot guides and place in between the two body panels. Allow to dry completely.

08. Glue tab on foot to inside of Shrek's leg. Fold foot upward and repeat with other foot.

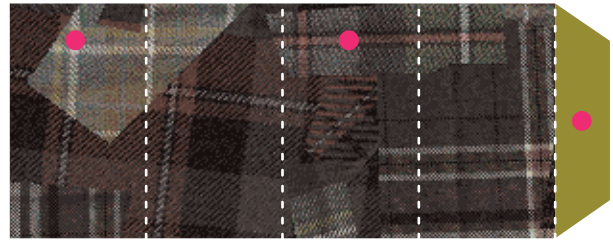
09. Glue Shrek's head to the top of the front side panel, where it is labeled.

10. Done!

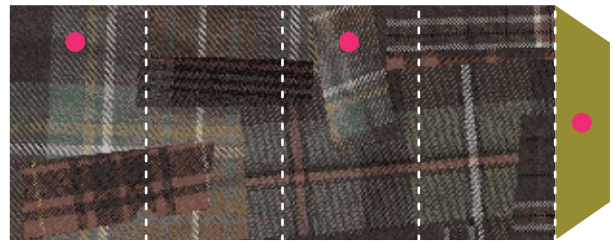




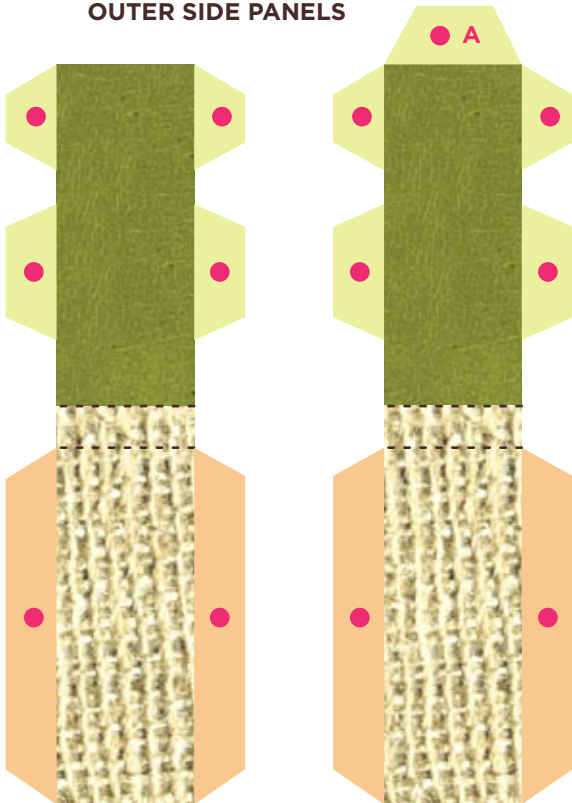
FEET



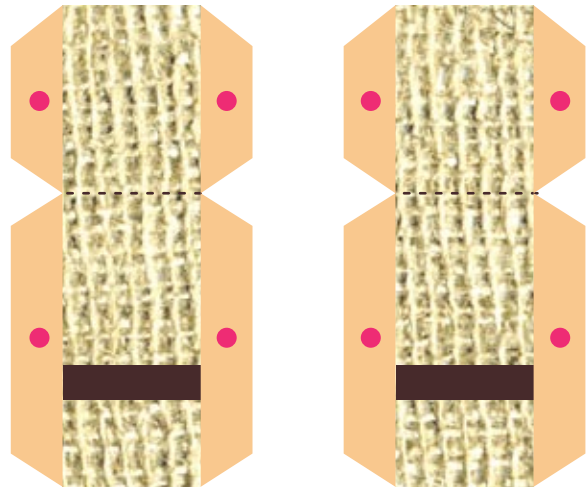
LEGS



OUTER SIDE PANELS



INNER SIDE PANELS





FRONT



BACK



© 2016 DreamWorks Animation LLC. All Rights Reserved. © 2016 Twentieth Century Fox Home Entertainment LLC. All Rights Reserved.
 TWENTIETH CENTURY FOX, FOX and associated logos are trademarks of Twentieth Century Fox Film Corporation and its related entities.

